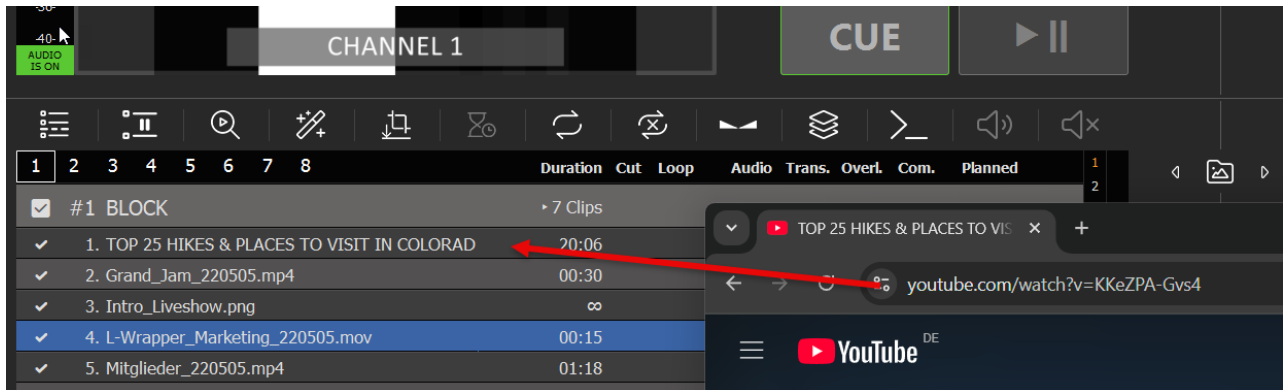


Insert YouTube Videos into Playlists

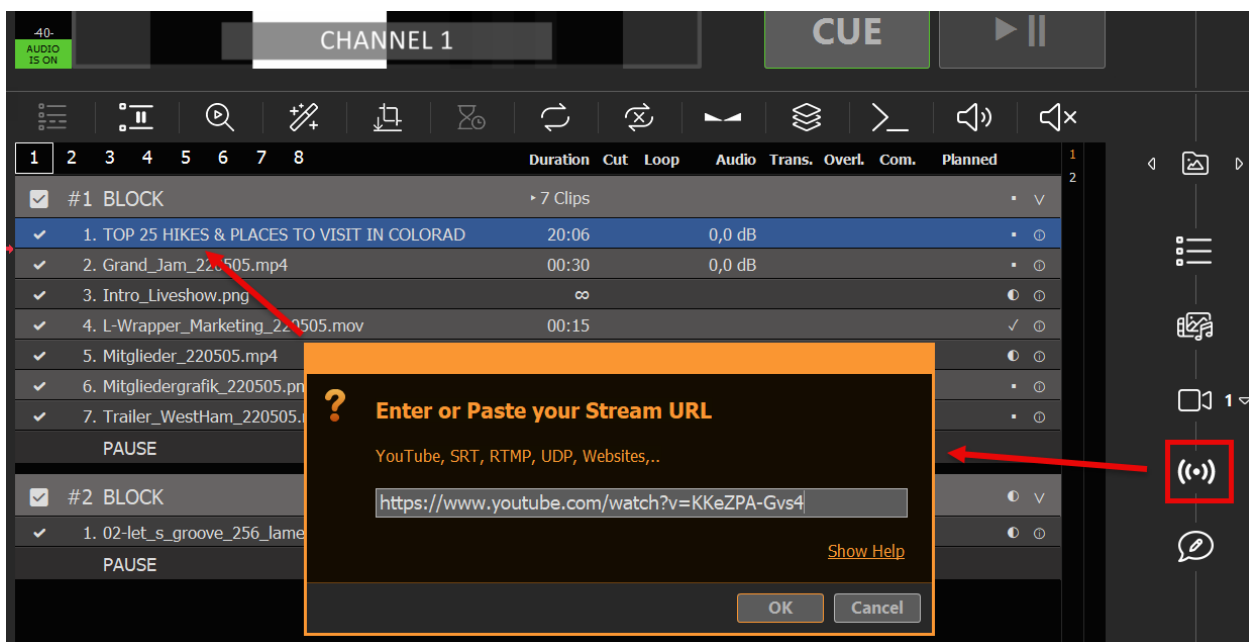
This article will show how to load and edit YouTube Videos.

1. Load YouTube into PLAYDECK

You can directly Drag Drop any YouTube URL from your Browser to PLAYDECK:



Or you can use the Stream Drag Drop Icon to paste/edit the URL:

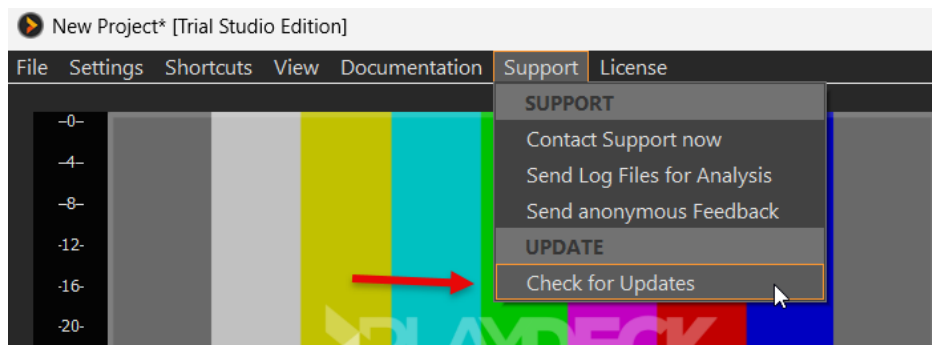


Your YouTube Videos is ready to play out-of-the-box. The quality will be pre-selected dependent on your Playlist Video Format and the Formats provided from YouTube.

Note: Avoid using long YouTube Links with Playlists like "...?v=0oIIRc0zc_U&list=RD0oIIRc0zc_U", as they might not work or cause Lag/Stutter. We recommend using short links like "...?v=0oIIRc0zc_U".

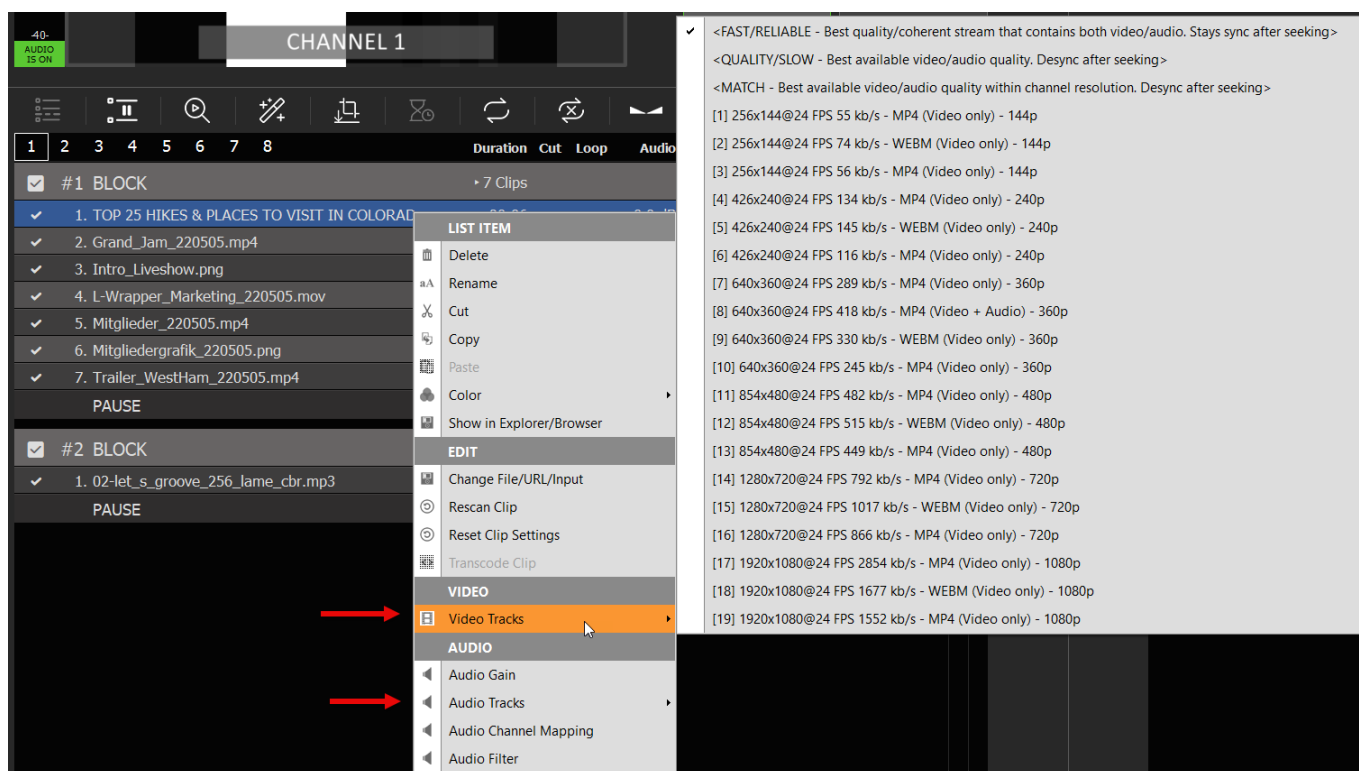
2. Update YouTube Driver

Should the added YouTube Clip be shown as UNPLAYABLE/RED in PLAYDECK, please update the integrated YouTube Driver. Chances are, YouTube made changes to its platform and you need a newer driver from us:



3. Change Quality, Video and Audio

YouTube Videos are always available in different qualities. You can switch Video Tracks by right-clicking the YouTube Video:



Note: YouTube provides combined Video+Audio Tracks, which are much faster. If you switch to non-combined Video Track, caching can take much longer and seeking can desync video/audio.