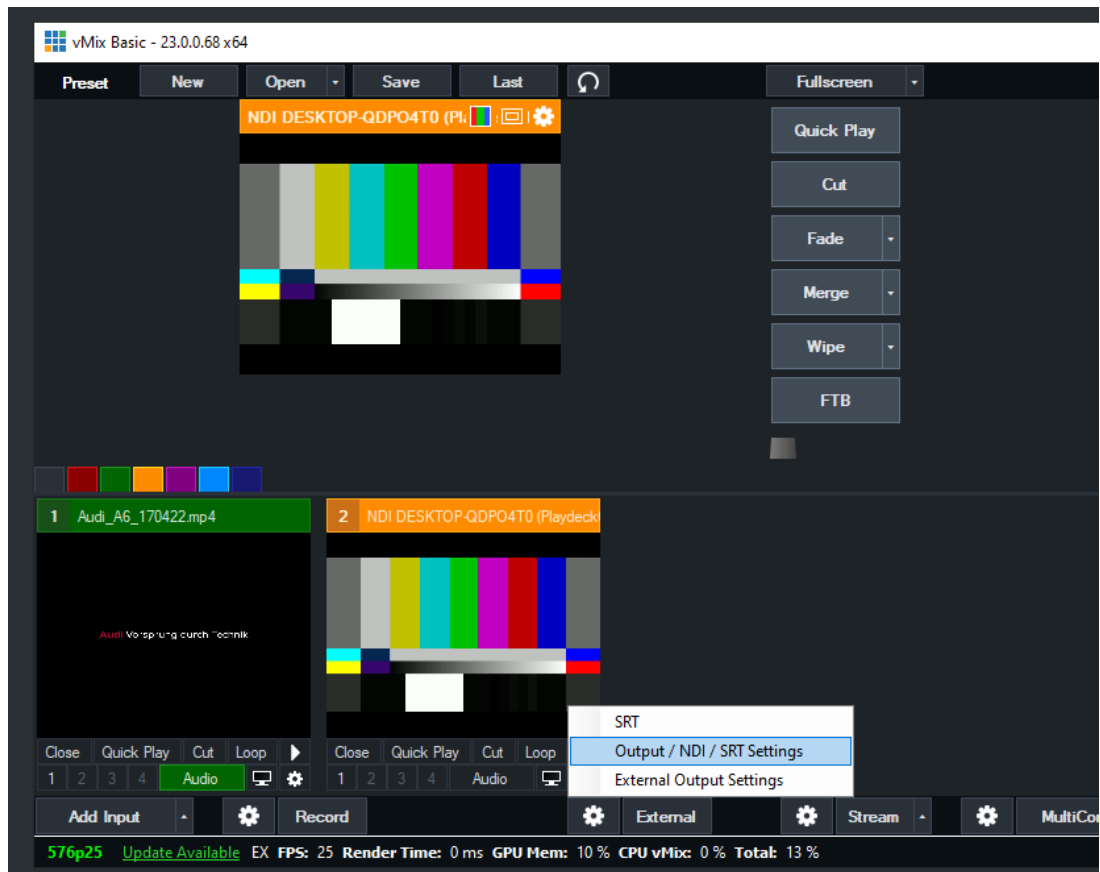


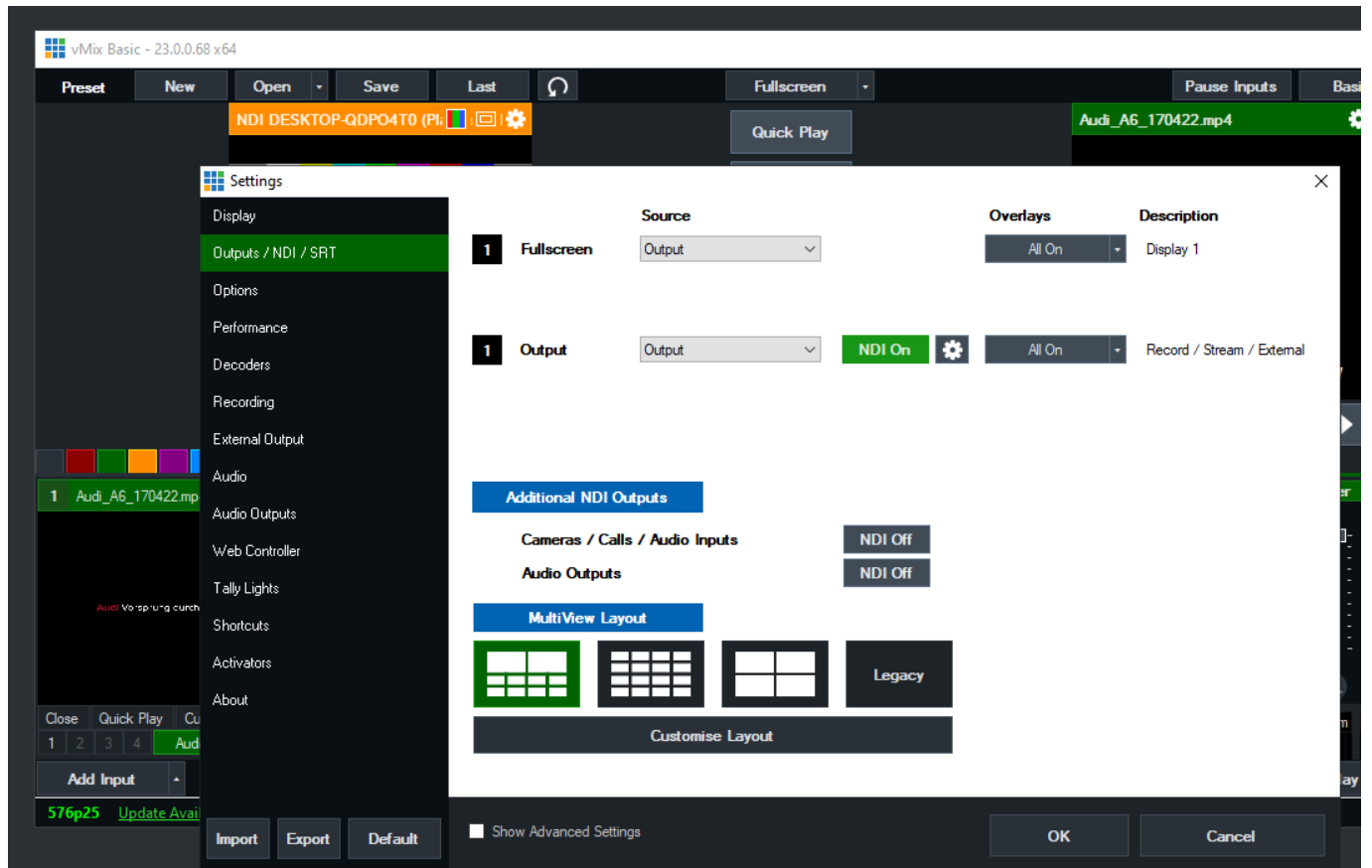
Video from/to vMix

The best way to connect vMix with PLAYDECK (both ways) is NDI. Multichannel Audio is also fully supported.

Send Video from vMix to PLAYDECK

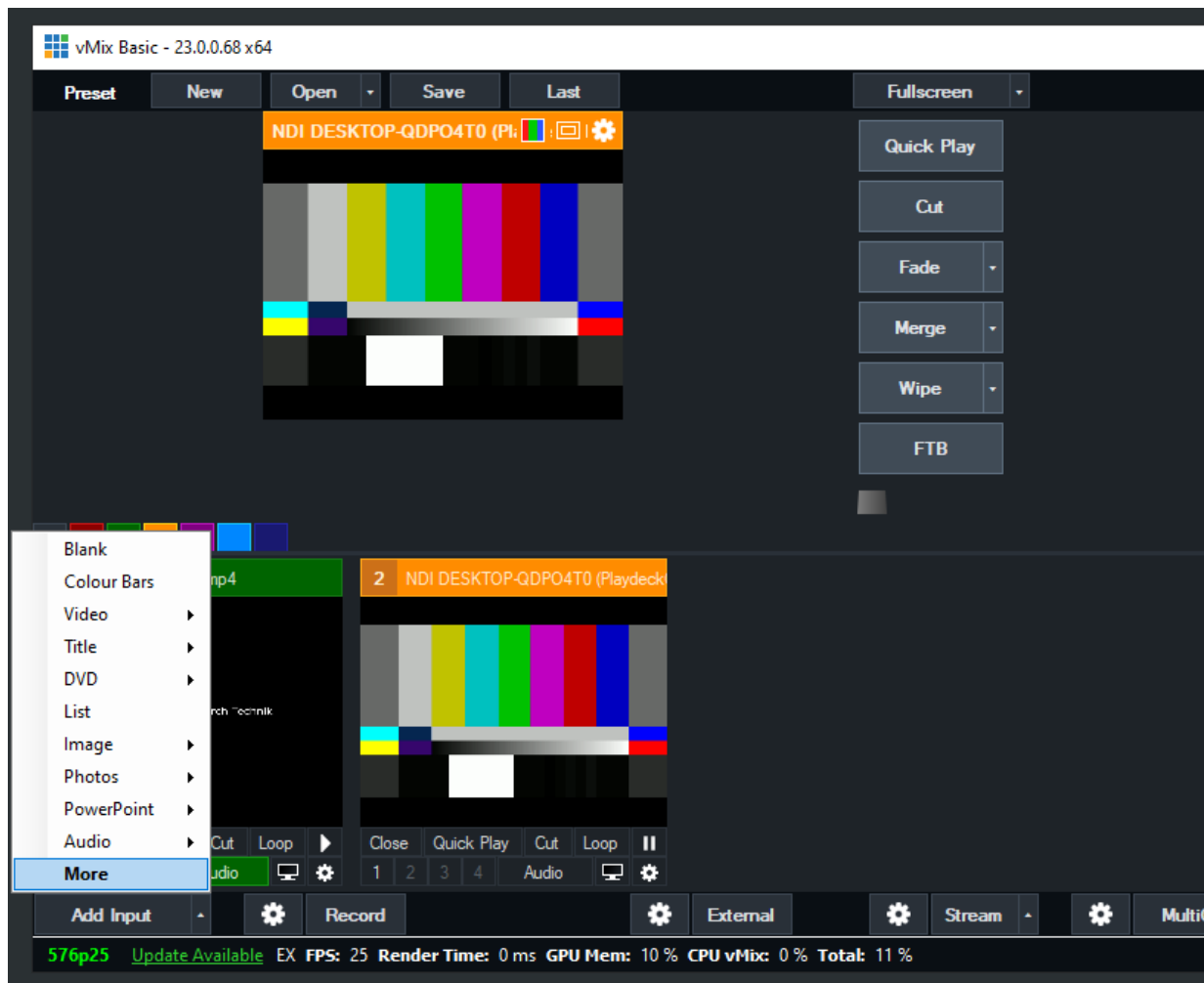
You only need to activate NDI as External Output like this:





Send Video from PLAYDECK to vMix

Activate NDI Output in PLAYDECK and add the NDI as new Source in vMix like this:



Preset

New

Open

Save

Last

Fullscreen

Input Select



Video



DVD



List



Camera



NDI / Desktop Capture



Stream / SRT



Instant Replay



Image Sequence / Stinger



Video Delay



Image



Photos



PowerPoint



Colour



Audio



Audio Input



Title / XAML



Flash



Virtual Set

Close

1 2

Add

NDI

Local Desktop Capture

NDI®



DESKTOP-QDPO4T0



PlaydeckCh1



PlaydeckCh2

☐ Low Bandwidth Mode

☐ Audio Only

☐ PsF

☐ Increase Buffer Size